

2D and 3D Geospatial Data for Architects

The most complete range of high quality geospatial data available online from one source.

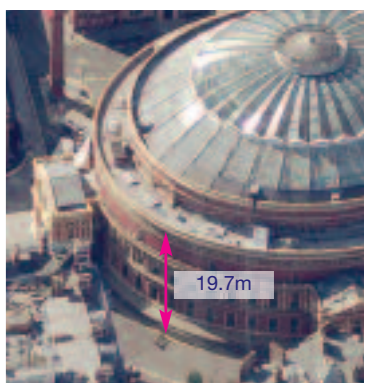
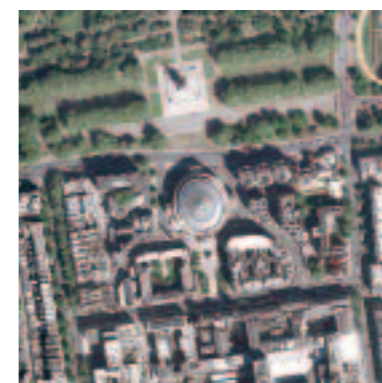
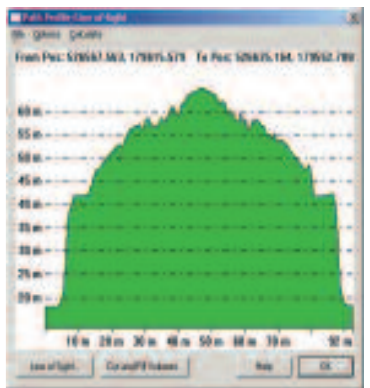
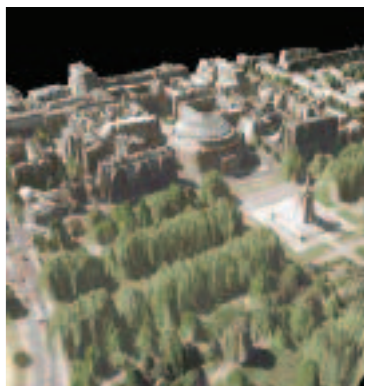
centremapslive.com
the mapping portal from Laser Surveys

Established for over 30 years **Laser Surveys**, now with **centremapslive.com**, is one of the longest established map distribution/survey companies in the UK. With our unique knowledge of mapping and geology we have designed and developed a mapping delivery system to meet your needs and give best value.



centremapslive.com
the mapping portal from Laser Surveys

Brockamin House, Leigh, Worcester WR6 5JU
t. 01886 832972 e. enquiries@centremaps.com
f. 01886 833485 w. www.centremapslive.com



Meeting the needs of architects

centremaps*live*.com

...the future of mapping

www.centremapslive.com can help you whether you are at the feasibility stage or involved in design.



Ordnance Survey large scale mapping (OS MasterMap®)

- Available in PDF as well as vector formats for import into CAD or GIS systems

Plan Design and Build (PDB) Licence

Licence Ordnance Survey Data with the new PDB licence to enable;

- Data sharing within and between companies
- Multi-year licensing (up to 30 months)
- Data archiving (for up to 13 years)

The standard Ordnance Survey Internal Business Use (IBU) licence is of course also available

Height data

Choose the most appropriate height data for your project. Our range includes;

- Digital Surface (DSM) and Digital Terrain (DTM) models
- Data from numerous sources. Includes Ordnance Survey, NextMap, Infoterra, Cities Revealed, NPA Group, BLOM and the Environment Agency
- Height data derived from a variety of collection techniques including LiDAR, IFSAR and photogrammetry
- Choice of collection dates, accuracies and resolutions
- Data available as contours or as grids in x,y,z format points
- Available formats include CSV, ASCII Grid, DXF and DWG

Aerial imagery

Comprehensive range of aerial imagery available online

- Imagery from numerous sources including Ordnance Survey, Cities Revealed, Infoterra, GetMapping and BLOM
- Extensive range of resolutions and collection dates for most sites
- Overhead and Oblique aerial imagery available
- Available formats include PDF, JPG and Geo-referenced TIFF

Advanced Imagery Measurement System

Centremapslive.com is now giving construction industry professionals access to an exciting new product BlomURBEX – a solution centred on base technology and imagery provided by Blom and delivered online by centremapslive.com. This unique product combines oblique aerial imagery with a state-of-the-art software system that provides unparalleled visual intelligence.

This is a significant step forward in the application of oblique aerial photography with online tools for taking bearings, distance, area and most significantly height measurements directly from the screen.

Mac compatible

The standard GB interface is fully Mac compatible when accessed via the Opera or Firefox browsers.



Centremaps is an approved member of the RIBA CPD Providers Network with a seminar entitled 'Mapping Data – 2D and 3D Information'. Please contact us for further information or to request a free seminar.

The full range of products and services available on [centremapslive.com](http://www.centremapslive.com) also includes;

Ordnance Survey Raster Products

1:10000, OS Streetview, 1:25000, 1:50000, 1:250000 and OS Miniscale formats in image formats or Adobe PDF.

OS MasterMap data plus options

Purchase OS MasterMap data, aerial imagery and height data in combination. Download in CAD compatible formats or as an Adobe Layered PDF.

Precision drawing and area measurement tools

The advanced CentremapsLive interface enables accurate, online, area and distance measurements. Ordnance Survey raster products may be edited using an extensive range of drawing tools.

GroundSure Environmental Data

By working with GroundSure we can supply a comprehensive range of high quality environmental data for your site including;

- GroundSure EnviroInsight: Environmental Data Report
- GroundSure GeoInsight: Geology and Ground Stability Report
- GroundSure MapInsight: Comprehensive, high resolution, small and large scale historical mapping

GroundSure Environmental Reviews

A market-leading range of environmental reviews, which include analysis from an in-house team of consultants. These reviews provide reliable risk screening suitable for both residential and commercial use. The primary reviews for commercial use are **GroundSure Screening, GroundSure Review and GroundSure Developer**.

BGS Geological Information and Ground Stability Ratings

Free access to the UK Land Survey Register

Geospatial Data for Northern Ireland, from Land and Property Services, is now available on-line. This includes small and large scale mapping, historical mapping, aerial imagery and height information.

Free benchmark finder and listing

Locate and view the values of benchmarks throughout Great Britain.

Underground Utility searches

Integrated account management

The licence and account management tools enable companies to have sight of map holdings both within and across offices – alerting them to licences that are pending expiry. Expired licences can be renewed at the click of a button. Furthermore, this system helps to ensure data purchases are not duplicated by identifying areas of mapping data that have been previously purchased.



Your next step

Log on to www.centremapslive.com and register. Follow the straightforward step-by-step guide to place your order.

Alternatively call 01886 832972 or e-mail enquiries@centremaps.co.uk for further information.

...centremapslive.com is different

- Creating maps and data since 1975
- Unrivalled product range selected on a 'best of breed' basis
- Unique 'layered' Adobe PDF solutions
- Simple mapping licence and archive management
- Complete national benchmark finder and listing
- Free training/technical support
- Added value from 'in-house' land survey teams
- Advanced height, distance and area measurement tools
- Northern Ireland Data on-line
- Mac and PC compatible interface